

takeuchiTM
From World First to World Leader

HYDRAULIC EXCAVATOR

TB3150R

PROUDLY DISTRIBUTED BY



MATERIAL HANDLING

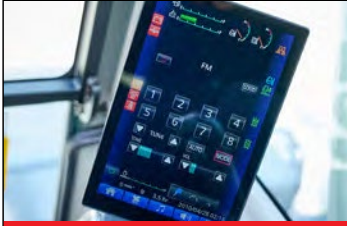
1800 425 438

toyotatakeuchi.com.au



Operating Weight: 16,450kg

TOUGH, POWERFUL, RELIABLE



8" Touch Screen Display



Intuitive Operation



Multi Functional Grips (OPT)



Takeuchi Access Management

Building upon the renowned strengths and proven performance of its predecessor, the TB2150R, the new TB3150R delivers a powerful evolution, engineered for demanding applications. It retains the qualities the market values while significantly elevating operational efficiency, performance, and comfort. Its robust fixed boom, a core characteristic maintained from its predecessor, ensures powerful and precise operation across a wide range of applications.

The TB3150R boasts significantly increased hydraulic horsepower. This crucial upgrade boosts performance in simultaneous operations, particularly those requiring high pressure.

Advancements in design and operator well-being are clear throughout the TB3150R. Its interior and exterior designs from our 3 Series have been seamlessly integrated, creating a refined, comfortable, and highly functional operating environment. To maximize operator comfort and control, the TB3150R features a large 8-inch color touch screen display, optional multi-functional grips for tailored operation, sophisticated integrated electronic control for specific operations, improved cab visibility, and height-adjustable handrails for transport flexibility.

Finally, the TB3150R sets a new standard for security with the Takeuchi Access Management System. This groundbreaking keyless start feature assigns a unique user ID to each machine. Operators can start a machine using a registered passcode or an optional RFID key, ensuring only authorized personnel can operate it, thus providing invaluable peace of mind and robust protection.



Completely Redesigned Automotive Styled Interior with Intuitive Operation

Product Features

ENGINE

- EU Stage V / EPA Tier 4 Emission Compliant
- DOC+DPF+SCR Exhaust After Treatment
- Automatic Fuel Bleed System
- Double Element, Air Cleaner
- Automatic Deceleration
- Working Modes: Standard and ECO
- Bi-metal Clutch Fan Engagement for Radiator
- Fuel Supply Pump w/ Reel System
- Engine Safety Start System on the Left Console
- Engine Auto Stop

ELECTRICAL

- 8" Color Touch Screen Display
- 270 Degree Camera
- Multi-Switch Control Panel & Jog Dial Control
- EH Controls for Travel, Dozer Blade and Adjust Cylinder
- Travel Alarm
- LED Light Package
- TFM (Takeuchi Fleet Management; GPS)*
- Takeuchi Access Management System (Engine Push Start)
- LED Additional Boom Light

OPERATOR'S STATION

- Cab with Auto Air Conditioner, Windshield Wiper and Washer, Skylight with Sunshade, Rain Guard, DAB Radio with Bluetooth Hands-Free Function and USB Port (TYPE-C)
- ROPS / OPG(Top Guard, Level II)
- Hands-Free Microphone
- Air Suspension Seat with Heat
- 2" Retractable Seat Belt
- OPG Level II Front Guard

UNDERCARRIAGE AND FRAME

- Triple Flanged Track Rollers
- 2-Speed Travel with Automatic Shift
- 500 mm Rubber Crawlers
- Heavy Counterweight
- Heavy Duty Dozer Blade with Float
- Rubber Pads for 500 mm Steel Crawlers (optional)

TAKEUCHI FLEET MANAGEMENT

- Minimize Downtime
- Remote Diagnostics
- Utilization Tracking
- Proactive Maintenance
- Control Costs

HYDRAULIC

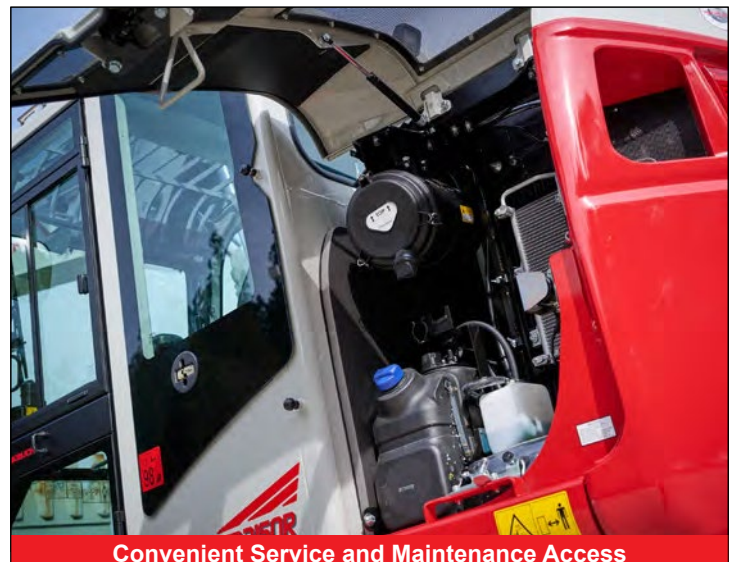
- Variable Displacement, Open Center Hydraulics
- Hydraulic Joystick Controls
- Proportional Control for 1st Auxiliary Hydraulic Line
- Proportional Control for 2nd Auxiliary Hydraulic Line
- 3rd Auxiliary Hydraulic Control for Quick Hitch
- Adjustable Auxiliary Flow for 1st, 2nd and 4th Auxiliary Hydraulic Lines
- Pilot Accumulator
- Proportional Control for 4th Auxiliary Hydraulic Line (optional)
- Proportional Control for 4th Auxiliary Hydraulic Line (Independent) with Multi-Functional Grips (optional)
- Auxiliary Hydraulic Line Performance Package ; Auto Tank for 1st AUX, Auto Pressure Release for 1st & 2nd AUX and Pressure Adjustment for 1st & 2nd AUX

WORKING EQUIPMENT

- Reinforcement Fixed Boom
- 2,850 mm Arm
- Arm and Boom Holding Valve with Lift Alarm
- Pattern Change Valve (ISO or G)
- 2-Piece Boom (optional)
- Adjust Cylinder Holding Valve (optional)



Easy Service Access with Wide-Opening Covers



Convenient Service and Maintenance Access

* Functions may not be available in all countries, so please consult your Takeuchi dealer for details.

Product Specifications

OPERATING PERFORMANCE Mono Boom

Operating Weight (Steel Crawlers)	16,005 kg
Bucket Capacity (Heaped)	0.45 m ³
Slew Speed	11.0 min ⁻¹
Travel Speed	
1st	2.9 km/h
2nd	5.6 km/h
Gradeability	35 ^o
Ground Pressure	
Steel Crawlers	47.7 kPa
Maximum Bucket Breakout Force	96.3 kN
Maximum Arm Digging Force (2,850 mm Arm)	60.0 kN
Traction Force	157.5 kN

ENGINE

Model	Yanmar 4TN101FHT-2STB
Rated Output (ISO 14396)	85 kW/2200 min ⁻¹
Maximum Torque	462.8 Nm/1500 min ⁻¹
Displacement	3,847 ml
Alternator	24 V-1.92 kW
Battery (IEC 60095-1)	12 V - 90 A·h x 2

FLUID CAPACITIES

Engine Lubrication	14.3 L
Cooling System	18.0 L
Fuel Tank Capacity	240.0 L
Hydraulic Reservoir Capacity	100.1 L
Hydraulic System Capacity	225.0 L
DEF Tank Capacity	20 L

SAFETY and HEALTH

Vibration Levels	
Hand / Arm	≤ 2.5 m/s ²
Body	≤ 0.5 m/s ²
Noise Level	
Sound Power Level	LwA 98 dB

HYDRAULIC SYSTEM

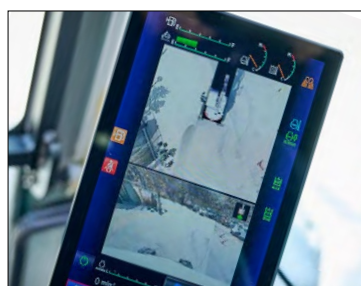
P1, P2	Variable Displacement Pump
Flow Rate	112.0 L/min
Relief Pressure	34.3 MPa
P3	Gear Pump
Flow Rate	22.0 L/min
Relief Pressure	3.9 MPa
P4	Gear Pump
Flow Rate	55.7 L/min
Relief Pressure	23.6 MPa
1st AUX	
Flow Rate	112 L/min
Flow Rate - High Flow	224 L/min
Hydraulic Pressure	27.5 MPa
2nd AUX	
Flow Rate	55.7 L/min
Hydraulic Pressure	23.6 MPa
3rd AUX	
Hydraulic Pressure	21.0 MPa
4th AUX	
Flow Rate	55.7 L/min
Hydraulic Pressure	23.6 MPa



Fixed Boom



TFM



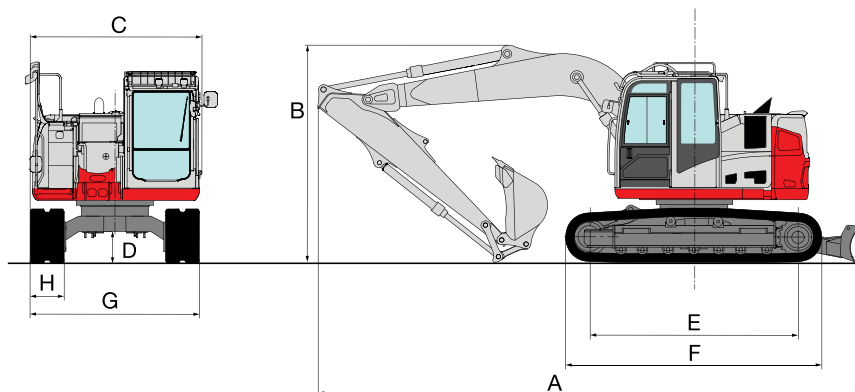
270 Degree Camera



Tiltable Roof Guard

TB3150R Machine Dimensions

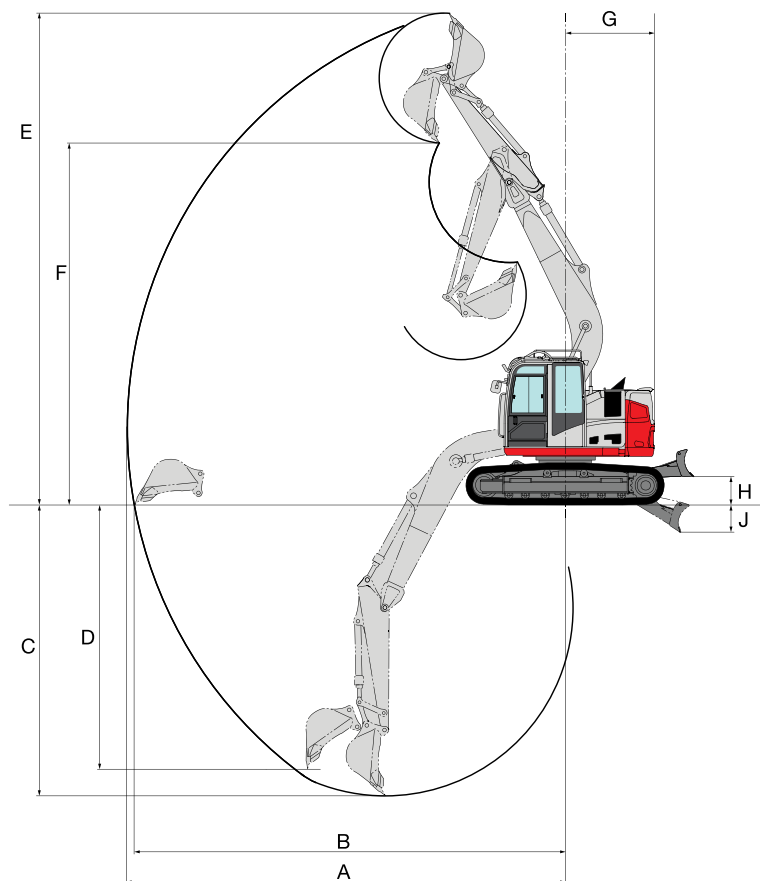
Mono Boom



MACHINE DIMENSIONS	Mono Boom 2,850 mm Arm
A Overall Length	7,950 mm
B Overall Height	3,240 mm
C Upper Structure Overall Width	2,530 mm
D Ground Clearance	475 mm
E Crawler Base	3,080 mm
F Crawler Overall Length	3,800 mm
G Crawler Overall Width	2,490 mm
H Crawler Shoe Width	500 mm

TB3150R Operating Dimensions

Mono Boom



OPERATING DIMENSIONS

Mono Boom

2,850 mm Arm

A	Maximum Reach	8,790 mm
B	Maximum Reach at Ground Level	8,665 mm
C	Maximum Digging Depth	6,030 mm
D	Maximum Vertical Digging Depth	5,515 mm
E	Maximum Height of Cutting Edge	9,630 mm
F	Maximum Dumping Height	7,170 mm
G	Slew Radius	1,700 mm
H	Dozer Blade Maximum Lifting Height	540 mm
J	Dozer Blade Maximum Lowering Height	515 mm

Images shown may depict overseas model and may include features not available in Australia. For full Australian specifications, contact TMHA for more details.

© 2026 Takeuchi MFG. Co., Ltd. All Rights Reserved. In accordance with our established policy of continued improvement, specifications and features are subject to change without notice. Pictures may show options other than standard equipment.

FORM: TB3150R Excavator Spec Sheet - Apr. 2026

PROUDLY DISTRIBUTED BY



MATERIAL HANDLING

1800 425 438

toyotatakeuchi.com.au